

TOMORROW COMMERCIAL TOWER

International City, Dubai





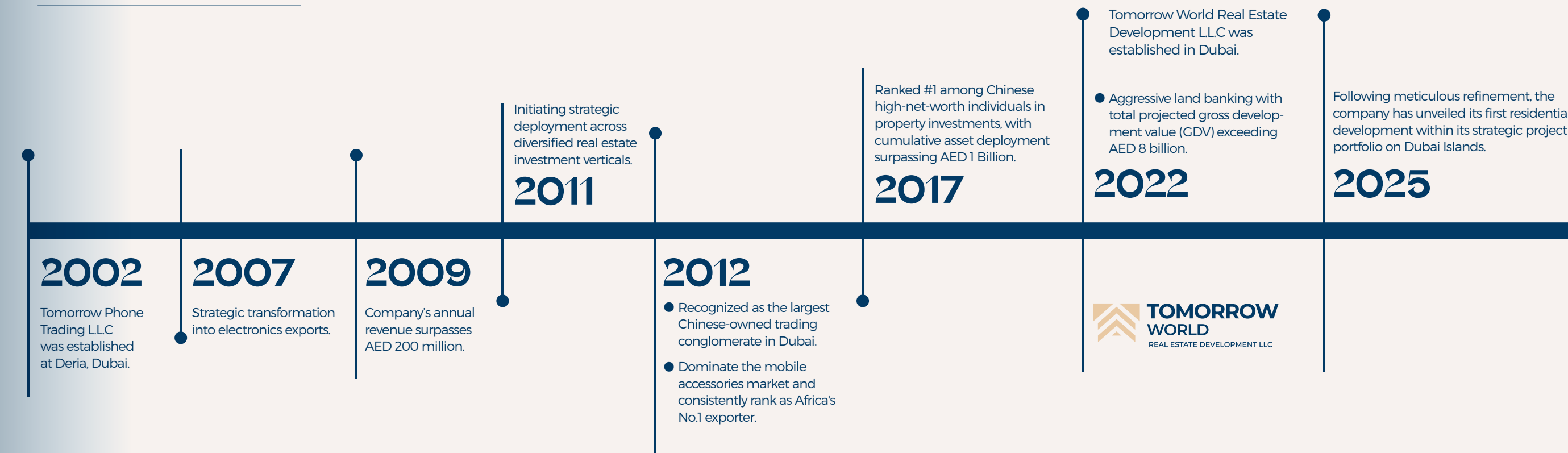
WHY INVESTING IN DUBAI

ABOUT TOMORROW WORLD

Established in 2022 and headquartered in Dubai, United Arab Emirates, Tomorrow World Properties is an innovative boutique real estate developer and a distinguished subsidiary of the Tomorrow World Group - a Dubai-based conglomerate with more than 20-year legacy (since 2002) of global trading excellence and strategic investments.

OUR JOURNEY

MILESTONES TIMELINE




Unparalleled
Tax&Currency Benefits


Thriving Tourism
Industry


Economic
Dynamism & Diversification


Safety &
Stable City


Government Initiatives
(Dubai 2040 Urban Master
Plan & Dubai Economic
Agenda 'D33')

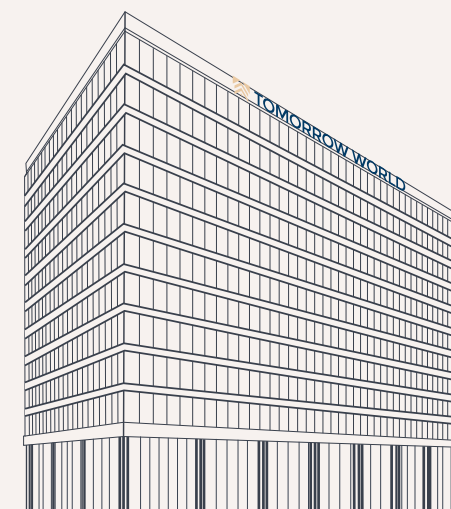

World Class Free Zones &
Infrastructure


Multicultural Society &
Global Community


Growing Population &
Booming Rental Market


Competitive Property Prices &
Strong Return On Investment


Regulated Market &
Various Visa Options



ABOUT TOMORROW COMMERCIAL TOWER

STRATEGIC LOCATION

Nestled in the city's one of the most active business hubs - International City, the project offers unparalleled connectivity with easy access to every major attraction Dubai has to offer.

International City 1 Metro Station (Upcoming) . [1 min]

Dubai International Airport . [15 mins]

Dubai Creek Harbor . [15 mins]

Dubai Mall/ Downtown/ Business Bay . [20 mins]

Burj Al Arab . [30 mins]

Palm Jumeirah/ Dubai Islands . [35 mins]



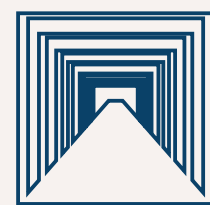
TOP 10 PROJECT VALUES



All-glass curtain wall



Smart building systems



Five-star double-height
grand lobby



Ample dedicated &
public parking spaces



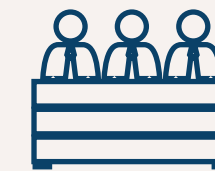
At CBD main road &
only 400 meters to metro station



Abundant tenant resources – Dubai's
leading occupancy rates & ROI



Each unit features a private bathroom &
a dedicated pantry



Direct developer-operated
property management



Four high-speed OTIS elevators
(18-person capacity each)



Developer's headquarter – Guarantees high-quality
delivery & construction progress



MAIN ENTRANCE



GRAND LOBBY



PUBLIC AREAS & CORRIDOR



PUBLIC WASHROOM



YOUR DREAM OFFICE SPACE!
MODERN OFFICE.
TOP-NOTCH FACILITIES



THE BEST PLACE TO WORK!
EXPERIENCE EFFICIENCY IN COMFORT



TOMORROW'S
SMART SHOPPING CHOICE

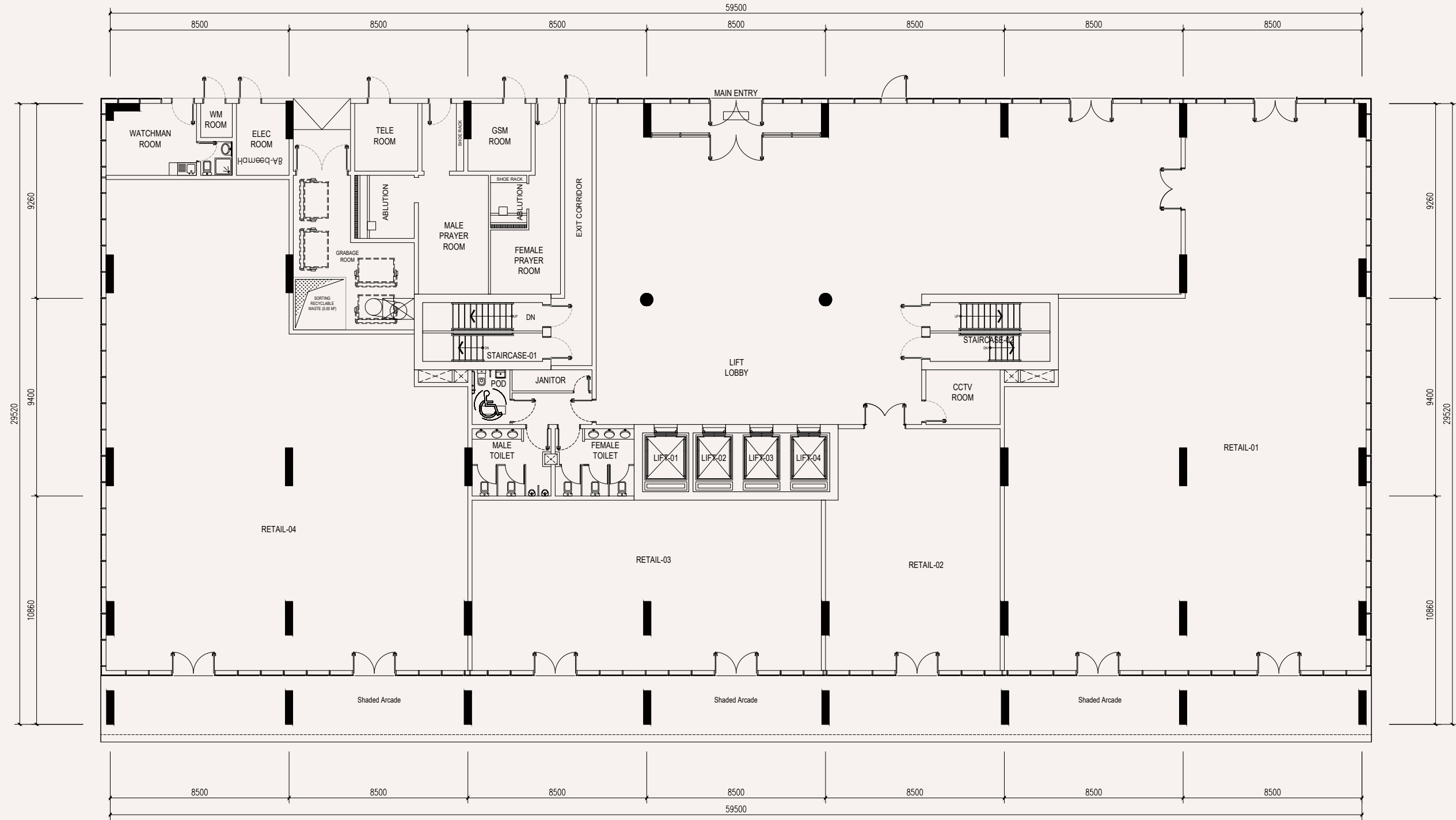


TOMORROW COMMERCIAL

BUILD YOUR SUCCESS STORY
HERE!

FLOOR PLANS

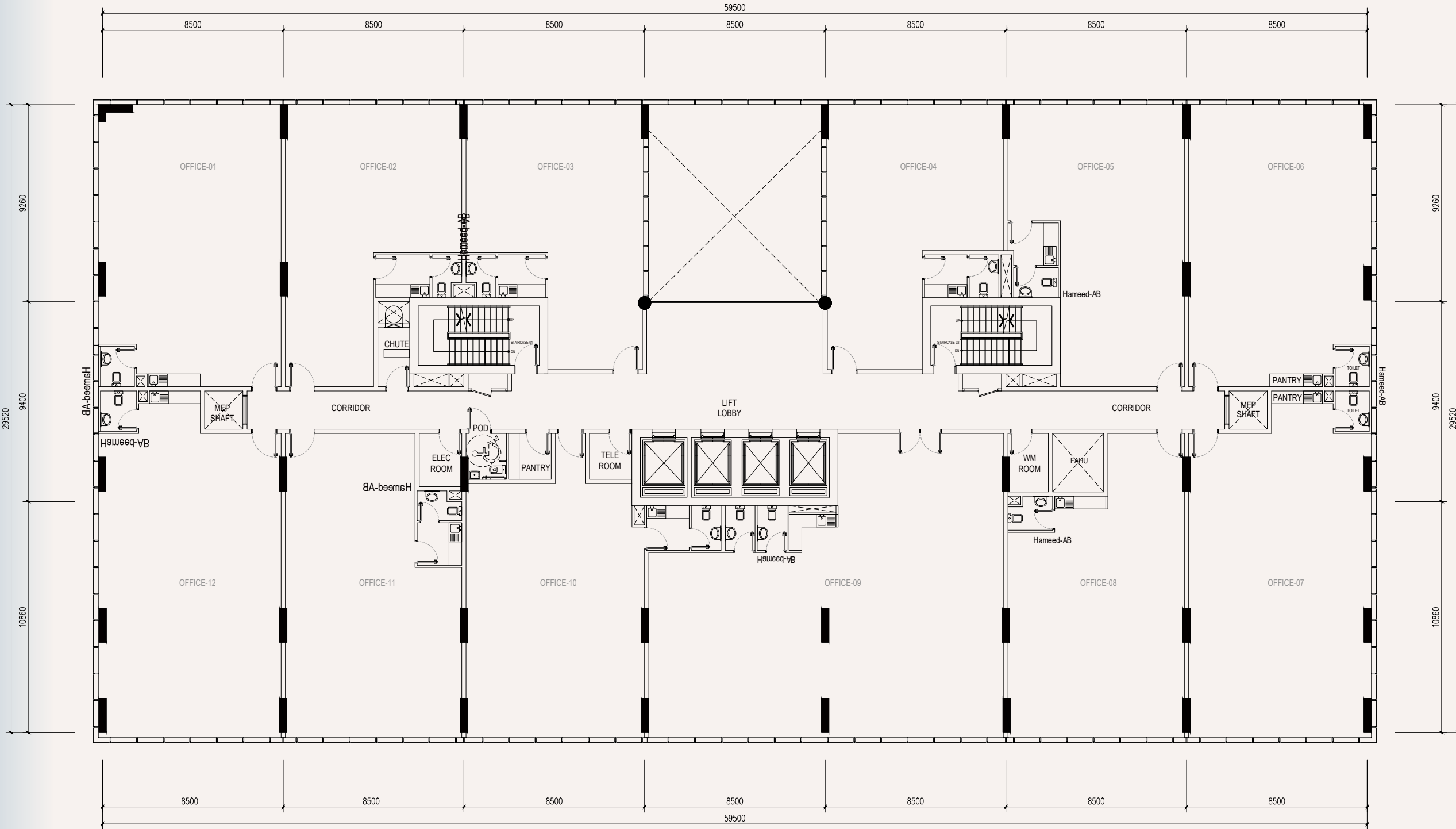
Burj Khalifa



Main Road

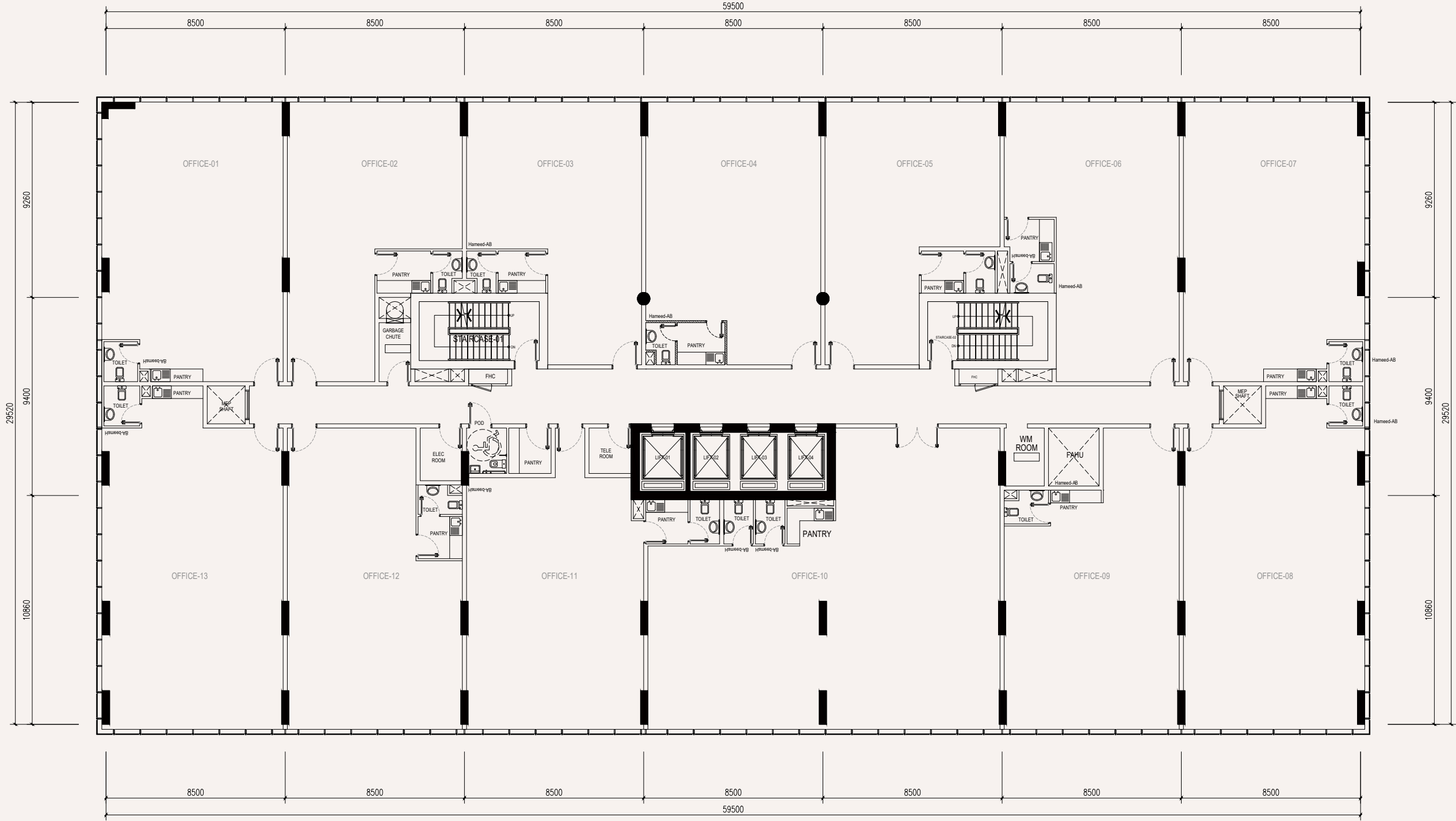
G FLOOR

Burj Khalifa



Main Road

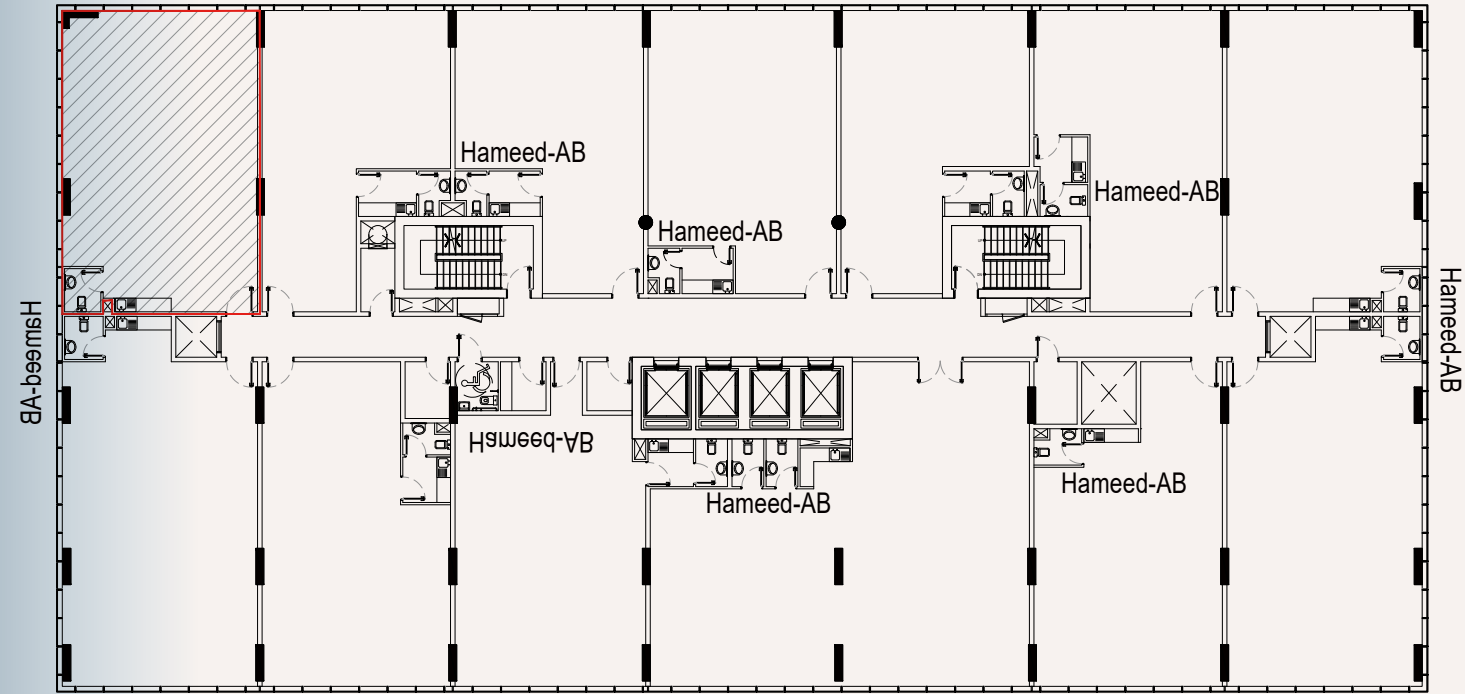
1ST FLOOR



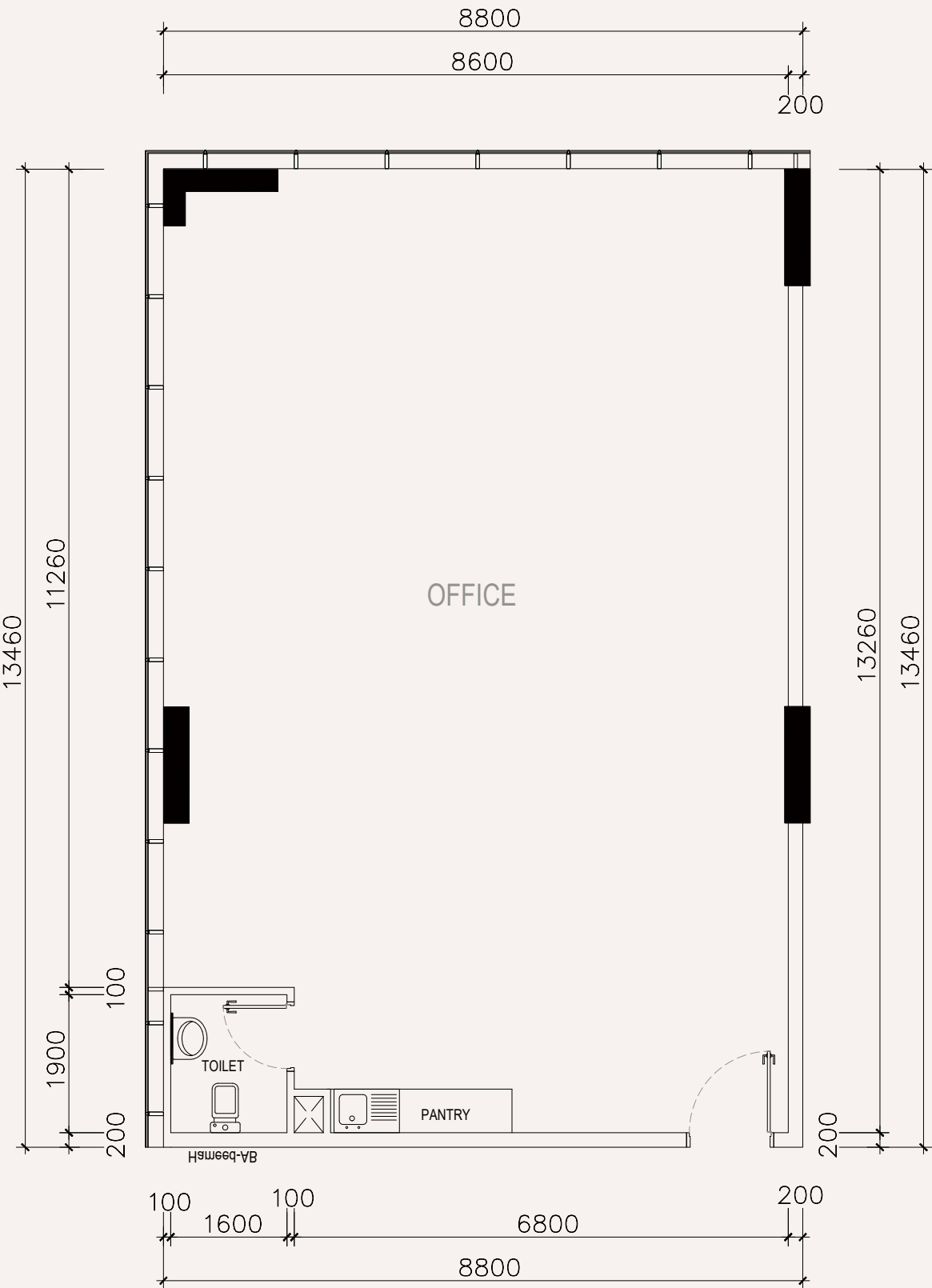
Main Road

TYPICAL FLOOR

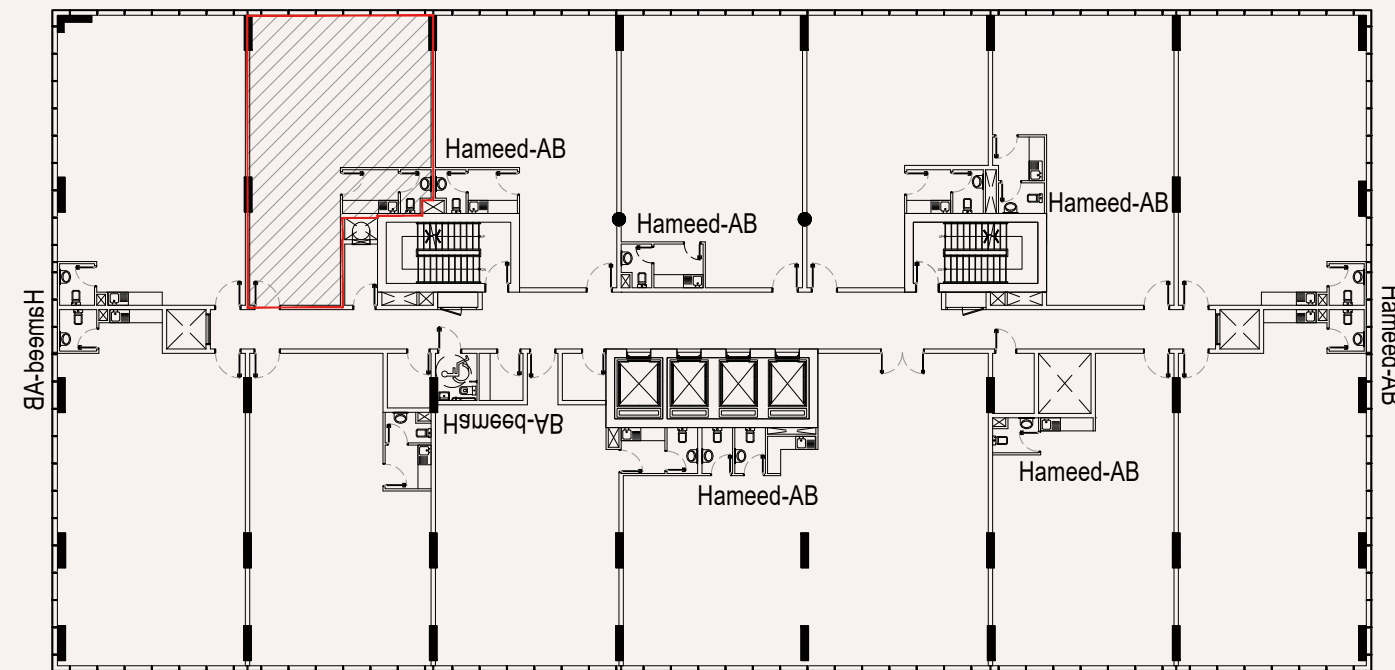
OFFICE LAYOUT 1



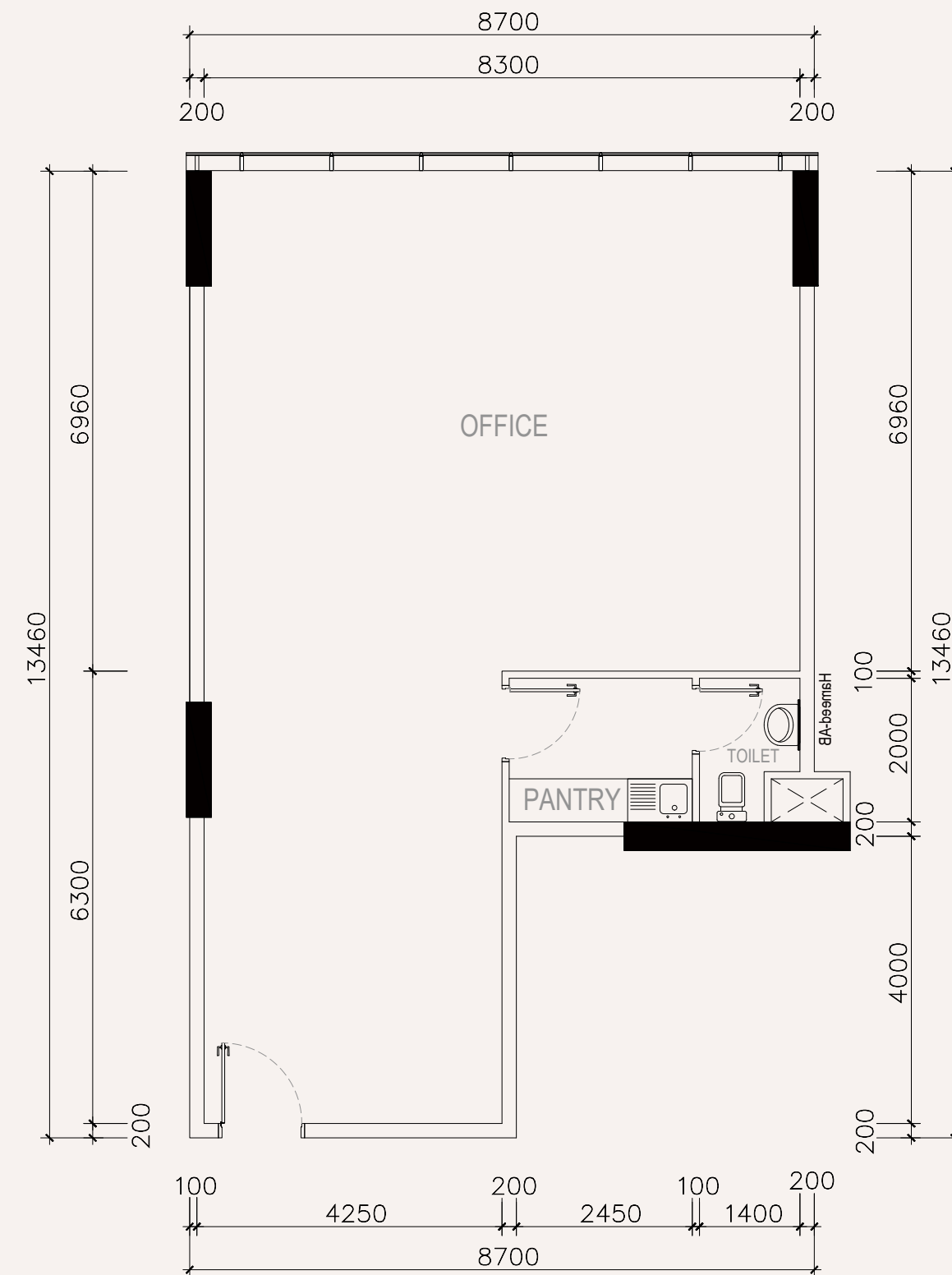
KEY PLAN



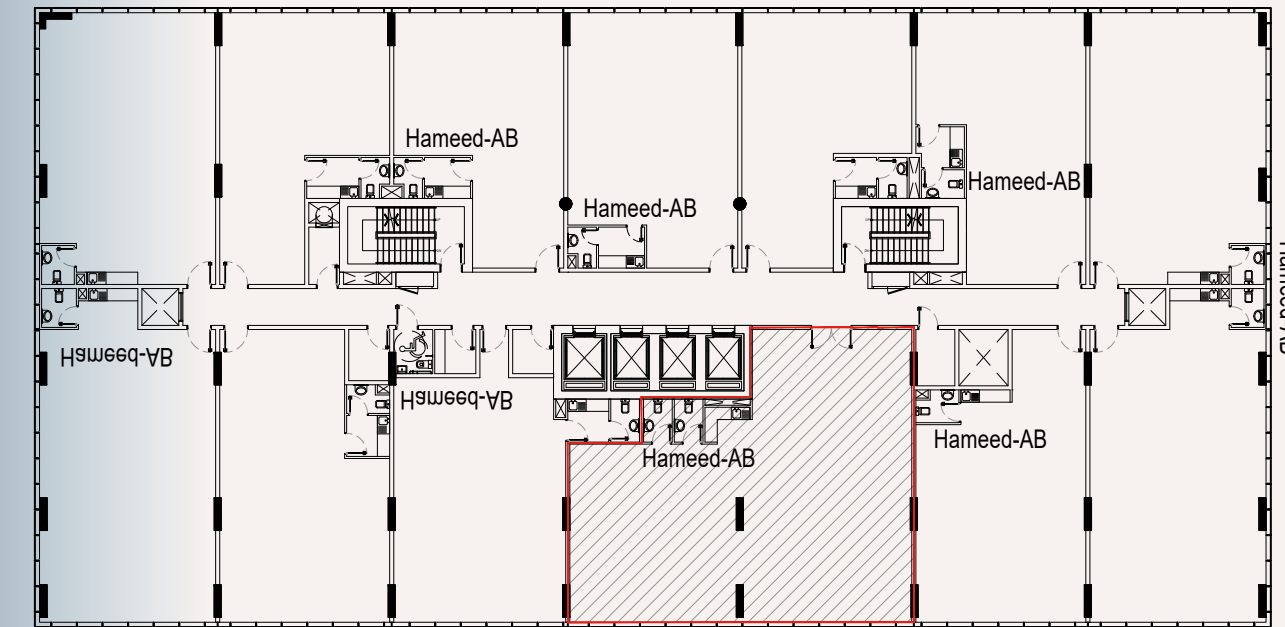
OFFICE LAYOUT 2



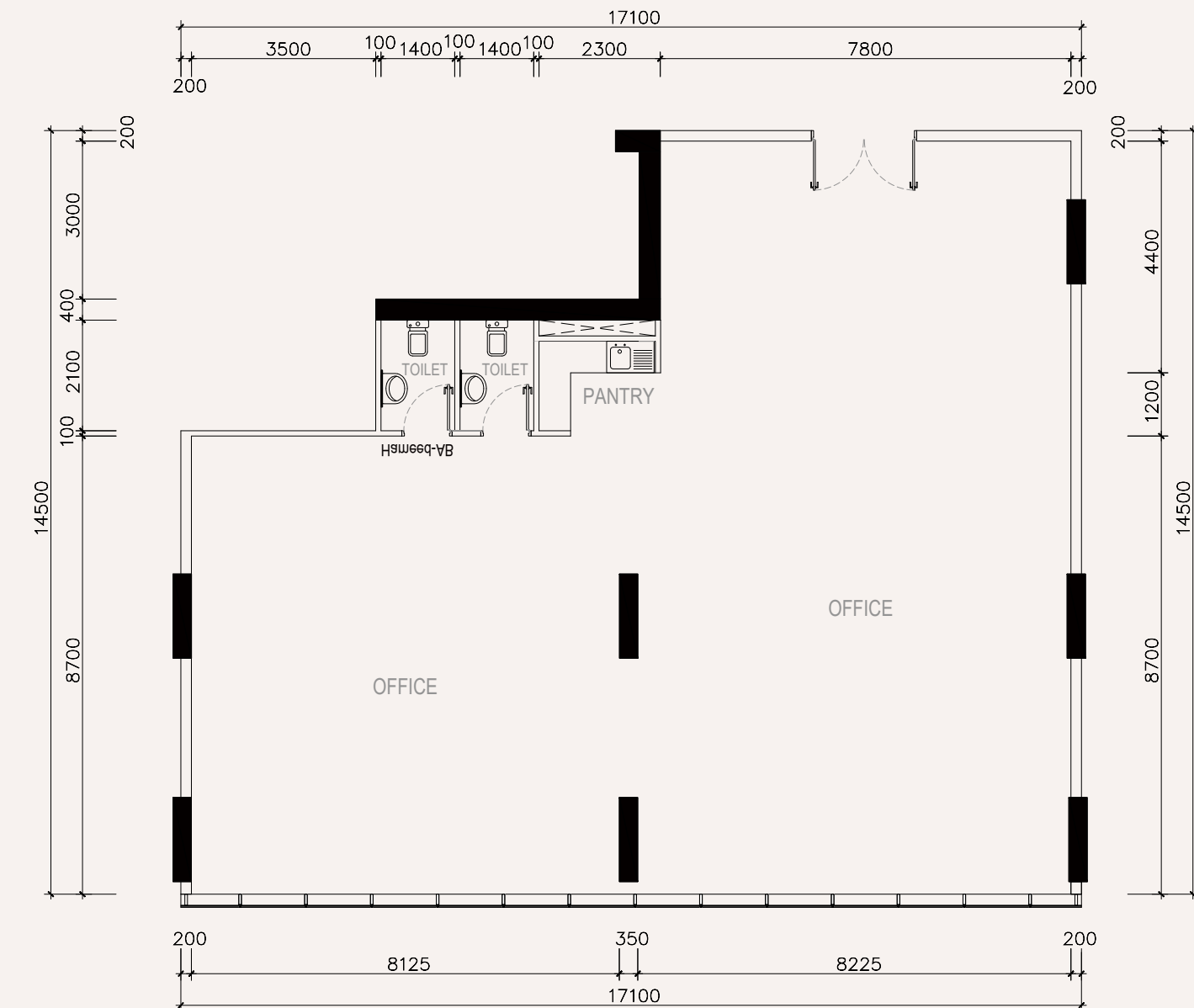
KEY PLAN



OFFICE LAYOUT 3



KEY PLAN



From startups to global corporations, Tomorrow Commercial Tower provides the ideal platform for businesses to flourish and expand. The vibrant commercial environment, region advanced property management facilities and sophisticated design create an unparalleled business experience.

